

## Appendix B – Provincial Tables of Circumstances

The Provincial Tables of Circumstances provided by the Ministry of the Environment are a reference guide for landowners within identified vulnerable areas. Landowners requesting a hard copy of any of these tables, or who would appreciate assistance in determining their local circumstances, should contact the Drinking Water Source Protection team at [dwsp.comments@nbmca.on.ca](mailto:dwsp.comments@nbmca.on.ca).

Please provide contact information where staff can best reach you to follow up on your request.

The Tables can be accessed online:

[http://www.ene.gov.on.ca/environment/en/legislation/clean\\_water\\_act/STDPROD\\_081301](http://www.ene.gov.on.ca/environment/en/legislation/clean_water_act/STDPROD_081301)

## Appendix C – Provincial Table of Threats

The Provincial Table of Threats, created by the Ministry of the Environment to support the 21 Prescribed Threats of O.Reg 287/07 Section 1.1(1) under the *Clean Water Act, 2006*.

[http://www.ene.gov.on.ca/environment/en/resources/ssLINK/STDPROD\\_080919\\_f](http://www.ene.gov.on.ca/environment/en/resources/ssLINK/STDPROD_080919_f) (1.61 MB file)

## Appendix D - Consultations & Notices

Sections 15-17 of Ontario Regulation 287/07 specify requirements for consultation for the Draft and Proposed versions of the Assessment Report. These include required notices, contents, stakeholders, and timelines for overall consultation periods and dates of acceptable public meetings. It is anticipated that at each stage of consultation, information about the previous stages will be included in the report version, and all requirements will be met in the final Submitted Assessment Report.

Minimum Requirements for Consultation are as follows:

- Posting of Draft Assessment Report for a 35-Day period (internet and select hard-copies made available)
  - Notices sent to affected property owners within Intake Protection Zone “1”s (IPZ1), and Wellhead Protection Area “A”s (WHPA-A), especially those engaging in activities that are or would be a significant threat
  - Notices sent to all municipalities within the Source Protection Area identified within the Terms of Reference
  - Notice Published online on the NBMCA website, additionally linked on the Conservation Ontario website.
  - Notice to affected First Nations Chief(s)
  - Notice published in local newspapers with sufficient regional coverage
  - Notice to be posted to locations where public access is reasonably expected.
- Holding a public consultation session no less than 21 days after the posting of the Draft Assessment Report with Notice.
- Providing a forum for comments to be received on the Draft Assessment Report.
- Posting of a Proposed Assessment Report for a 30-Day period (internet and select hard copies made available)
  - Notice sent to the same stakeholders identified for the Draft Assessment Report, plus any additional individuals who made comments on the Draft Assessment Report.
- Providing a forum for comments to be received on the Proposed Assessment Report
- Submission to Source Protection Authority.
- Submission to Ministry of Environment, Director of Source Protection Branch.

In addition to these minimum requirements for consultation, the background studies and technical reports used for the creation of the Assessment Report were taken to the public at after draft versions had been received (May/June/October 2009) for feedback and comments. Each Vulnerability, Issues Identification, and Risk Assessment report for the Municipal Water supplies were presented to the public. When major changes were required for the delineation of the Callander Bay Intake Protection Zones based on new location information and the addition of a Drinking Water Issue, the whole report was reviewed and brought to a second phase of public consultation (May 2010). Technical input was also sought from the formed Technical Advisory Committees, or other local knowledge was gained from existing advisory groups or committees.

Water Budget (Quantity Stress Assessment, Local Risk Assessment) review was completed by a variety of technical reviewers as required by the Technical Rules. This included Ministry of Natural Resources staff, representatives from academia, industry professionals, and local technical review (City of North Bay staff).

## Posting of the Draft Assessment Report

### Contents:

- 1) Summary of how the requirements were met.
- 2) Posted Notices on the [www.actforcleanwater.ca](http://www.actforcleanwater.ca) website
- 3) Copy of notice sent to Conservation Ontario for inclusion on the Source Protection Region listing.
- 4) Copy of Notice sent to municipalities within the Source Protection Area identified in the Terms of Reference.
- 5) Copy of Notice sent to Chief Marianna Couchie of the Nipissing First Nation.
- 6) Copy of Notice published in the North Bay Nugget, Almaguin Forrester, and Mattawa Recorder.
- 7) Copy of Notice sent to areas of consideration for the Issues Contributing Area of Callander Bay.
- 8)
- 9) Copy of Notice sent to homeowners in the WHPA-A of Powassan.
- 10) Summary of public comments and responses as required under Regulation 287/07 (General) of the Clean Water Act, 2006, Paragraph 15 (5).
- 11) Summary of municipal concerns which have not been resolved to the satisfaction of the municipalities, required under The Clean Water Act, 2006, Clause 16 (a).
- 12) Summary of band council concerns which have not been resolved to the satisfaction of the band council, required under O.Reg 287/07, Clause 16 (a).
- 13) Copy of Notice sent to applicable LaMP co-ordinator.
- 14) Posted Notice for consultation on various maps which were provided in an enlarged format.

### 1. Summary of how the requirements were met:

#### Inspection:

A copy of the Draft Assessment Report was made available at the North Bay-Mattawa Conservation Authority offices immediate after the posting online. Within a week of the posting, copies were circulated to the Clerks of Callander, Mattawa, North Bay, Powassan and South River. In addition, draft versions were made available at the circulation desk of each of the Public Libraries associated with those municipalities. The Notice published (See 6) informed members of the public of these locations.

#### Notices:

A copy of the Notice (see 6) was published in the following sources:

- North Bay Nugget: Tuesday, August 3, 2010. Page B8 (Region-wide coverage)
- Almaguin Forrester: Thursday, August 5, 2010. Page 17 (Highway 11 area coverage)
- Mattawa Recorder: Sunday, August 8, 2010. Page 5 (Highway 17 area coverage)

The notice was available from the North Bay-Mattawa Conservation Authority office, located in North Bay, Ontario. The office is centrally located within the Region.

Information contained within the notice was included in Letters of Notice to the following groups:

- Nipissing First Nation (See 5)
- The Following Municipalities (See 4): City of North Bay, Municipality of Callander, Municipality of Powassan, Village of South River, Town of Mattawa, and the Townships

of Papineau-Cameron, Bonfield, Calvin, Machar, Strong, Joly, Nipissing, Mattawan, Chisholm and East Ferris.

- A flyer (See 7) was distributed to approximately 1700 addresses in the Callander Bay contributing area, including portions of East Ferris and Chisholm.
- A flyer (See 9) was distributed to two addresses within the WHPA-A of the Powassan wellfield, as both properties have septic systems which is a significant threat activity.

### **Public Meetings on the Draft Assessment Report:**

As is demonstrated in item 6, two public meetings were held. For the purposes of the legislative requirements, it should be noted that the meeting in South River on August 24 constitutes the Official date of Public Consultation.

- Callander Legion, Lansdowne St, Callander. August 19, 2010 at 5-8:30 PM
- South River Friendly Circle, 10 Isabella. August 24, 2010 at 5-8:30 PM

### **Considerations of Public Comments:**

The Source Protection Committee, in preparing the Proposed Assessment Report, reviewed the comments received (See 9). Review is required of some of the comments as they relate to ongoing monitoring of sites and for impacts on the Phosphorous Budget. No other comment contained sufficient concern to make alterations to the Draft Document. Comments from a phase one review by technical staff at the Ministry of Environment were reviewed, and a summary of the responses to those comments is being made available to the Ministry staff.

2. Posted Notices on the www.actforcleanwater.ca website

Act for Clean Water - DWSP Home

Page 1 of 1



**DRINKING WATER SOURCE PROTECTION**  
NORTH BAY - MATTAWA

[DWSP Home](#) | [Contact Us](#) | [Source Water Protection Committee](#) | [Protecting Your Water](#) | [General Information](#) | [Developing The Plan](#) | [News & Events](#) | [NBMCA](#)

**Calendar of Events**  
July 2010

Sun	Mon	Tue	Wed	Thu	Fri	Sat
				1	2	3
4	5	6	7	8	9	10
11	12	13	14	15	16	17
18	19	20	21	22	23	24
25	26	27	28	29	30	31

- [Join our Mailing List](#)
- [Send Your Comments](#)

**Education & Outreach**  
To find out more about how you can protect your drinking water source, please browse our website or contact us directly.

- [Newsletter](#)
- [Resources](#)
- [Facts](#)
- [Events](#)

**Drinking Water Source Protection**

One of the roles of the North Bay-Mattawa Conservation Authority over the next several years is to coordinate the development of a Source Protection Plan for the five municipal drinking water systems and a well cluster in our watershed. Source Protection planning is a derivative of Ontario's Clean Water Act and is fully funded by the Province of Ontario.

The NBMCA is committed to working with the municipalities, various stakeholders and the general public to ensure that the Source Protection Plan is relevant at the local level and that our drinking water sources are protected now and for future generations.

**Working Together to Protect Our Water**

Everyone should be able to trust that the water they drink is safe. Protecting the sources of our drinking water - lakes, rivers or underground aquifers - is the first step in ensuring safe drinking water.

The Clean Water Act has been passed by the Ontario legislature to assist communities with protecting their municipal drinking water supplies at the source. Through source protection planning, communities will identify potential risks to local water quality and water supply, and will create a plan to reduce or eliminate these risks. The task of developing a plan will involve watershed residents working with municipalities, conservation authorities, property owners, farmers, industry, health officials, community groups, and others.

July 28, 2010

**News Feed**

[North Bay-Mattawa Source Protection Area Draft Assessment Report Posted for Public Comment July 28 to August 31, 2010](#)  
[More](#)

**Contact:**  
15 Janey Avenue  
North Bay, Ontario  
P1C 1N1

Phone: (705) 474-5420  
Fax: (705) 474-6793

[Email Us!](#)



Made possible through the support of the Government of Ontario

Site Map | © Copyright 2009-2010 www.actforcleanwater.ca - Website designed and maintained by VS Group [webwork@vsgroup.ca](mailto:webwork@vsgroup.ca)



[DNBP Home](#) | 
 [Contact Us](#) | 
 [Source Water Protection Committee](#) | 
 [Protecting Your Water](#) | 
 [General Information](#) | 
 [Developing The Plan](#) | 
 [News & Events](#) | 
 [NBMCA](#)

**Calendar of Events**

July 2010

Sun	Mon	Tue	Wed	Thu	Fri	Sat
				1	2	3
4	5	6	7	8	9	10
11	12	13	14	15	16	17
18	19	20	21	22	23	24
25	26	27	28	29	30	31

[Join our Mailing List](#)

[Send Your Comments](#)

**Education & Outreach**

To find out more about how you can protect your drinking water source, please browse our website or contact us directly.

- [Newsletter](#)
- [Resources](#)
- [Facts](#)
- [Events](#)

**Assessment Report**

**North Bay-Mattawa Source Protection Area  
Draft Assessment Report Posted for Public Comment  
July 26 to August 31, 2010 - (30 meg PDF)**

The primary goal of the Clean Water Act is to protect the sources of municipal drinking water from pollution and overuse. In order to properly protect drinking water, we need to understand what is going on in the surrounding watershed - both above ground as surface water and below ground and groundwater.

The Assessment Report is a technical document that identifies and evaluates threats to drinking water quality and quantity. It provides the scientific foundation for the source protection planning process.

An Assessment Report includes information on vulnerable areas and potential threats. Wide public consultation will take place during the preparation of the reports. A copy of the proposed draft will be available on the website.

**The Assessment Report:**

- identifies the vulnerable areas near wells and intakes
- identifies the types and number of threats to water quality near wells and intakes
- ranks the potential threats as low, moderate or significant
- examines the amount of water available

The North Bay-Mattawa Source Protection Area Assessment Report will provide the Source Protection Committee with information that will help determine how best to protect the quality and amount of their local water resources through the development of a Source Protection Plan due in 2012.

The Draft Assessment Report is posted here for your review and comment. Over the next few days the document will be divided and posted by Chapter to facilitate downloading and printing.



Made possible through the support of the Government of Ontario



Site Map | © Copyright 2009-2010 www.actforcleanwater.ca | Website designed and maintained by VS Group webwork@vsgroup.ca

### 3. Copy of notice sent to Conservation Ontario for inclusion on the Source Protection Region listing.

**Robert Pringle**

---

**From:** Robert Pringle  
**Sent:** Monday, July 26, 2010 5:07 PM  
**To:** 'tkilbourne@conservationontario.ca'  
**Subject:** NBMSPA Draft Posting!

Good afternoon,

On behalf of the North Bay-Mattawa Source Protection Committee, we are pleased to present the *Draft Assessment Report for the North Bay-Mattawa Source Protection Area*.

The full text document can be retrieved at <http://actforcleanwater.ca/index.php?page=assessment-report-2>.

Over the next couple days we will be making the necessary modifications for accessibility of the posting via the website.

Many thanks to all our partners: the stellar Committee and Authority, the fine folks of Conservation Ontario, the dream team of Source Protection Branch staff at Ministry of the Environment, our all-star consulting crew, the lovely folks at Ministry of Natural Resources, and the letters D-W-S and P. Our eternal gratitude also goes to Phillip the Duck and your wonderful bounty.

We've also updated the website, so if there are tech glitches, please let us know.

Also, we might have to change the link – soon enough <http://www.actforcleanwater.ca/> will be the reliable home of the NBMSPA.

**Robert Pringle, B.E.S.**

Source Protection Planner  
North Bay-Mattawa Conservation Authority  
[RobertPr@nbmca.on.ca](mailto:RobertPr@nbmca.on.ca)

15 Janey Avenue  
North Bay, ON P1C 1N1  
Phone: (705) 474-5420  
Fax: (705) 474-9793



#### 4. Copy of Notice sent to municipalities within the Source Protection Area identified in the Terms of Reference.



## NOTICE

**To:** Municipal Clerks / CAOs, Mayors and Councilors in the North Bay-Mattawa Source Protection Area

**From:** Barbara Groves, Chair, North Bay-Mattawa Source Protection Committee

**CC:** North Bay –Mattawa Source Protection Authority, Sue Miller

**Date:** July 26, 2010

**Pages:** 3 + Attached MOE Source Protection Plan Process information

**Re:** Posting of Draft Assessment Report for the North Bay-Mattawa Source Protection Area and the Notice to Landowners

---

We wish to advise your municipality about the posting of the Draft Assessment Report for the North Bay-Mattawa Source Protection Area on July 26, 2010.

**This letter serves as your official notice under Ontario Regulation 287/07.**

#### **Background**

Ontario's *Clean Water Act, 2006* was a legislative response to Justice O'Connor's 2002 Inquiry into the events of the Walkerton tragedy. The resulting Source Protection Planning process is guided by the Ministry of the Environment and implemented on a watershed level through the Conservation Authorities in Ontario. The process is supported locally through the Source Protection Authority (Municipal delegates to the Authority Board) and Source Protection Committee (Appointed members representing the public at-large, commercial/industrial, transportation, agriculture, and municipal interests). A position for a member representing the Nipissing First Nation is currently vacant. The Committee would appreciate their participation and has requested, at this time that staff contact the Nation to discuss this opportunity further.

The Source Protection Committee is responsible for the creation of a Draft Assessment Report, which is now being brought to the public for comment.

#### **Purpose of the Assessment Report**

The purpose of the Assessment Report is to compile the information collected in the Technical Study process as specified in the Terms of Reference for the North Bay-Mattawa Source Protection Area. These studies define the characterization of the Area, the quality and quantity of water resources, and assign risk and vulnerability ratings to the areas that are most susceptible to contamination or hydraulic alterations. The Assessment Report, following approval by the Ministry of Environment, will inform the development of the local Source Protection Plan.

#### **Important: Notice being sent to Property Owners**

Ontario Regulation 287/07 requires that official notice of the posting of the Assessment Report be given to individuals who are or could be engaging in activities that are or could be significant threats. A copy of the notice being published to local news media (Nugget) will be sent, along with information regarding the local vulnerable areas.

Continued...

**Access to the Draft Assessment Report**

The Draft Assessment Report has been posted on a new Drinking Water Source Protection website: [www.actforcleanwater.ca](http://www.actforcleanwater.ca). A hard copy is available at the North Bay-Mattawa Conservation Authority office in North Bay. Additional copies will be distributed to the municipal offices (Callander, Mattawa, North Bay, Powassan, & South River) and community libraries (including Trout Creek) of municipalities that have municipal drinking water systems, to be made available to the public. CD copies are also available from the NBMCA on request.

**Providing Comments on the Draft Assessment Report**

Written comments may be directed to the North Bay-Mattawa Source Protection Committee via:

Barbara Groves, Chair, North Bay-Mattawa Source Protection Committee  
c/o North Bay-Mattawa Conservation Authority  
15 Janey Avenue, North Bay, ON P1C 1N1  
Fax: 705-474-9793  
Email: [dwsdp.comments@nbmca.on.ca](mailto:dwsdp.comments@nbmca.on.ca)

**Public Meetings on the Draft Assessment Report will be held:**

**Thursday, August 19, 2010**

5 PM Open House – Display boards and materials for all systems  
7 PM Presentation: Callander, North Bay & Mattawa Systems  
**Callander Legion Branch 445, Lansdowne St. Callander, ON**

**Tuesday, August 24, 2010**

5 PM Open House – Display boards and materials for all systems  
7 PM Presentation: Powassan, South River and Trout Creek Systems  
**The Friendly Circle Senior's Drop-in, 10 Isabella, South River, ON**

Comments on the Draft Assessment Report will close on **August 31, 2010**. All comments received must be considered and, as warranted, incorporated into a revised version referred to as the Proposed Assessment Report, which will then be submitted to the Source Protection Authority.

**Continuing Process**

A second round of public consultation will commence for the Proposed Assessment Report on Thursday, September 16, 2010. Comments for this process are to be directed to the North Bay-Mattawa Source Protection Authority. All comments received during this period, up to and including Monday, October 18, 2010 will be attached to the Proposed Assessment Report which is to be submitted to the Ministry of the Environment on October 19, 2010. The Director of the Source Protection Branch and his staff will then begin the official review of the document to ensure it is complete and meets all legislated requirements. The next phase of the project is the development of source protection policies to address areas of concern that were identified in the Assessment Report.

**Attachment: Preparing Source Protection Plans**

Recently each municipality was given notice from the Ministry of the Environment regarding the amendments to O.Reg 287/07 of the Clean Water Act, 2006. These changes are regarding the Source Protection Plan phase of Source Water Protection. The information is highly relevant to those municipalities which have drinking water systems. The Source Protection Planner for the North Bay-Mattawa Conservation Authority is Robert Pringle.

Continued...

He will be contacting the municipalities in the near future to determine the best representation (staff, councilor or consultant) from each municipality to support the preparation of the Plan. Those identified will be invited to a presentation from the Ministry of the Environment during the Source Protection Committee meeting on Thursday, September 09, 2010, from 10 am to 12 pm. Please consider consulting with your Planning department, Board or consultant to identify a representative for that meeting.

Sincerely,



Barbara Groves  
Chair, North Bay-Mattawa Source Protection Committee



Sue Miller  
Project Manager, North Bay-Mattawa Source Protection Area

\* Note that the mentioned attachment is not included in this record.

## 5. Copy of Notice sent to Chief Marianna Couchie of the Nipissing First Nation.



# NOTICE

**To:** Chief Marianna Couchie, Nipissing First Nation  
**From:** Barbara Groves, Chair, North Bay-Mattawa Source Protection Committee  
**CC:** North Bay-Mattawa Source Protection Authority, Sue Miller  
**Date:** July 26, 2010  
**Pages:** 2 + Attached MOE Source Protection Plan Process information  
**Re:** Posting of Draft Assessment Report for the North Bay-Mattawa Source Protection Area

---

Dear Chief Couchie,

We wish to advise the Nipissing First Nation about the posting of the Draft Assessment Report for the North Bay-Mattawa Source Protection Area on July 26, 2010.

**This letter serves as your official notice under Ontario Regulation 287/07.**

### Background

Ontario's *Clean Water Act, 2006* was a legislative response to Justice O'Connor's 2002 Inquiry into the events of the Walkerton tragedy. The resulting Source Protection Planning process is guided by the Ministry of the Environment and implemented on a watershed level through the Conservation Authorities in Ontario. The process is supported locally through the Source Protection Authority (Municipal delegates to the Authority Board) and Source Protection Committee (Appointed members representing the public at-large, commercial/industrial, transportation, agriculture, and municipal interests). A position for a member representing Nipissing First Nation is currently vacant. The Committee would appreciate the participation of a member of the Band, and have requested, at this time, that our program staff contact the Band to discuss this opportunity further.

The Source Protection Committee is responsible for the creation of a Draft Assessment Report, which is now being brought to the public for comment.

### Purpose of the Assessment Report

The purpose of the Assessment Report is to compile the information collected in the Technical Study process as specified in the Terms of Reference for the North Bay-Mattawa Source Protection Area. These studies define the characterization of the Area, the quality and quantity of water resources, and assign risk and vulnerability ratings to the areas that are most susceptible to contamination or hydraulic alterations. The Assessment Report, following approval by the Ministry of Environment, will inform the development of the local Source Protection Plan.

### Access to the Draft Assessment Report

The Draft Assessment Report has been posted on a new Drinking Water Source Protection website: [www.actforcleanwater.ca](http://www.actforcleanwater.ca). A hard copy is available at the North Bay-Mattawa Conservation Authority office in North Bay. Additional copies are being distributed to the municipal offices and community libraries of municipalities that have municipal drinking water systems (Callander, Mattawa, North Bay, Powassan, & South River (Trout Creek library only)) to be made available to the public. CD copies are also available on request from NBMCA. A hardcopy will also be delivered to Nipissing First Nation shortly.

Continued...

**Providing Comments on the Draft Assessment Report**

Written comments may be directed to the North Bay-Mattawa Source Protection Committee via:

Barbara Groves, Chair, North Bay-Mattawa Source Protection Committee  
c/o North Bay-Mattawa Conservation Authority  
15 Janey Avenue, North Bay, ON P1C 1N1  
Fax: 705-474-9793  
Email: [dvsp.comments@nbmca.on.ca](mailto:dvsp.comments@nbmca.on.ca)

**Public Meetings on the Draft Assessment Report will be held:**

**Thursday, August 19, 2010**

5 PM Open House – Display boards and materials for all systems  
7 PM Presentation: Callander, North Bay & Mattawa Systems  
Callander Legion #445, 345 Lansdowne St, Callander, ON

**Tuesday, August 24, 2010**

5 PM Open House – Display boards and materials for all systems  
7 PM Presentation: Powassan, South River and Trout Creek Systems  
The Friendly Circle, Senior Drop-In Centre, 10 Isabella, South River, ON

Comments on the Draft Assessment Report will close on **August 31, 2010**. All comments received must be considered and, as warranted, incorporated into a revised version referred to as the Proposed Assessment Report, which will then be submitted to the Source Protection Authority.

**Continuing Process**

A second round of public consultation will commence for the Proposed Assessment Report on Thursday, September 16, 2010. Comments for this process should be directed to the North Bay-Mattawa Source Protection Authority. All comments received during this period, up to and including Monday, October 18, 2010 will be attached to the Proposed Assessment Report which is due to the Ministry of the Environment on October 19, 2010. The Director of the Source Protection Branch and his staff will then begin the official review of the document to ensure it is complete and meets all legislated requirements. The next phase of the project is the development of source protection policies to address areas of concern that were identified in the Assessment Report.

**Attachment: Preparing Source Protection Plans**

Recently each municipality was given the attached notice from the Ministry of the Environment regarding the amendments to O.Reg 287/07 of the Clean Water Act, 2006. These changes are regarding the plan development phase of Source Water Protection. In case you have not already received it, we trust you will find its contents informative.

Sincerely,



Barbara Groves  
Chair, North Bay-Mattawa Source Protection Committee



Sue Miller  
Project Manager, North Bay-Mattawa Source Protection Area

\* Note that the mentioned attachment is not included in this record.

6. Copy of Notice published in the North Bay Nugget, Almaguin Forrester, and Mattawa Recorder.



**PUBLIC COMMENT INVITED  
ON DRAFT  
ASSESSMENT REPORT**

Drinking Water Source Protection, related to Ontario's Clean Water Act, is a provincially-funded initiative designed to protect the quality and quantity of our municipal drinking water sources.

The North Bay-Mattawa Source Protection Committee has completed the Draft Assessment Report, summarizing the technical reports for the source drinking water in Callander, Mattawa, North Bay, Powassan, South River and Trout Creek. The Report identifies the vulnerable areas for each source as well as the threats to the quantity and/or quality of the drinking water source.

The Public is invited to view the Draft Assessment Report and provide comments by August 31, 2010.

---

View the North Bay-Mattawa  
Source Protection Area  
Draft Assessment Report  
online at [www.actforcleanwater.ca](http://www.actforcleanwater.ca),  
at NBMCA office in North Bay,  
and at  
Municipal Offices & Libraries in  
Callander Mattawa  
North Bay Powassan  
South River  
Trout Creek (library only)

Send Comments to  
Barb Groves, Chair  
Source Protection Committee at  
email: [dwsdp.comments@nbmca.on.ca](mailto:dwsdp.comments@nbmca.on.ca)  
online: [www.actforcleanwater.ca](http://www.actforcleanwater.ca)  
mail: North Bay-Mattawa Source Protection  
Committee  
15 Janey Ave., North Bay, ON P1C 1N1

---

**Public Meetings on Draft Assessment Report**  
will be held:

**Thursday, August 19, 2010**  
5-8:30 PM Open House : Information Display all systems  
7 PM Presentation: Callander, North Bay & Mattawa  
Callander Legion Branch 445, Lansdowne St. Callander

**Tuesday, August 24, 2010**  
5-8:30 PM Open House : Information Displays all systems  
7 PM Presentation: Powassan, South River & Trout Creek  
The Friendly Circle Senior's Drop-in, 10 Isabella,  
South River, ON



**NORTH BAY-MATTAWA  
CONSERVATION  
AUTHORITY**

(705) 474-5420  
[www.actforcleanwater.ca](http://www.actforcleanwater.ca)  
[dwsdp.comments@nbmca.on.ca](mailto:dwsdp.comments@nbmca.on.ca)

7. Copy of Notice sent to areas of consideration for the Issues Contributing Area of Callander Bay.



**PUBLIC COMMENT INVITED  
ON DRAFT  
ASSESSMENT REPORT**

Drinking Water Source Protection, related to Ontario's Clean Water Act, is a provincially-funded initiative designed to protect the quality and quantity of our municipal drinking water sources.

The North Bay-Mattawa Source Protection Committee has completed the Draft Assessment Report, summarizing the technical reports for the source drinking water in Callander, Mattawa, North Bay, Powassan, South River and Trout Creek. The Report identifies the vulnerable areas for each source as well as the threats to the quantity and/or quality of the drinking water source.

The Public is invited to view the Draft Assessment Report and provide comments by August 31, 2010.

---

View the North Bay-Mattawa  
Source Protection Area  
Draft Assessment Report  
online at [www.actforcleanwater.ca](http://www.actforcleanwater.ca),  
at NBMCA office in North Bay,  
and at  
Municipal Offices & Libraries in  
Callander Mattawa  
North Bay Powassan  
South River  
Trout Creek (library only)

Send Comments to  
Barb Groves, Chair  
Source Protection Committee at  
email: [dwsp.comments@nbmca.on.ca](mailto:dwsp.comments@nbmca.on.ca)  
online: [www.actforcleanwater.ca](http://www.actforcleanwater.ca)  
mail: North Bay-Mattawa Source Protection  
Committee  
15 Janey Ave., North Bay, ON P1C 1N1



(705) 474-5420  
[www.actforcleanwater.ca](http://www.actforcleanwater.ca)  
[dwsp.comments@nbmca.on.ca](mailto:dwsp.comments@nbmca.on.ca)

## **CALLANDER DRINKING WATER SOURCE**

### **Excerpt from Draft Assessment Report**

*"Threats in the identified vulnerable areas were assessed utilizing the "threats approach" and it was determined there are no existing significant drinking water threats in the vulnerable area of the Callander drinking water intake.*

*However, microcystin is listed as a drinking water issue parameter in the Ontario Drinking Water Quality Standards. Phosphorus contributes to the production of cyanobacteria which can produce the toxin microcystin.*

*Therefore, any activity that occurs in the Issue Contributing Area (See map on reverse) which can result in the input of phosphorus to Callander Bay is considered a threat.*

*This threat is automatically considered to be significant threats regardless of the vulnerability scores of the vulnerable areas."*

You are invited to attend a public meeting or view the Draft Assessment Report and provide your comments to the Source Protection Committee by August 31, 2010.

Any questions, please call Sue Miller, Source Protection Project Manager 705-474-5420 or email [dwsp.comments@nbmca.on.ca](mailto:dwsp.comments@nbmca.on.ca)

---

### **Public Meetings on Assessment Report**

will be held:

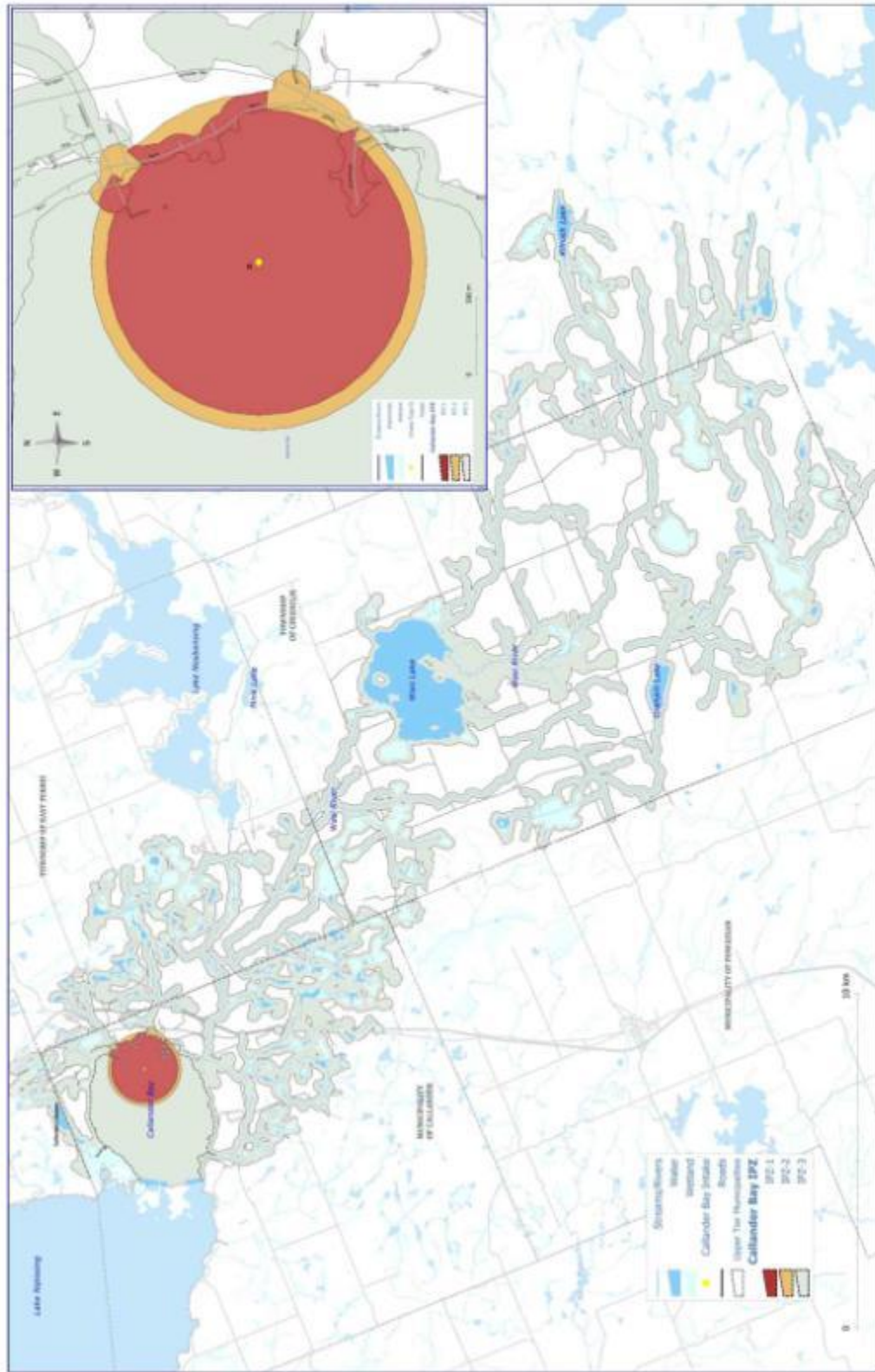
#### **Thursday, August 19, 2010**

5-8:30 PM Open House: Information Display all systems  
7 PM Presentation: Callander, North Bay & Mattawa  
Callander Legion Branch 445, Lansdowne St. Callander

#### **Tuesday, August 24, 2010**

5-8:30 PM Open House : Information Displays all systems  
7 PM Presentation: Powassan, South River & Trout Creek  
The Friendly Circle Senior's Drop-in, 10 Isabella,  
South River, ON

Report Figure 4-5 Callander Intake Protection Zones 1, 2 & 3  
 All areas within 120m of a watercourse which contributes to Callander Bay are a part of Intake Protection Zone 3, unless they are a part of the identified IPZ 1 or 2.





8. Copy of Notice sent to homeowners in the WHPA-A of Powassan.



**PUBLIC COMMENT INVITED  
ON DRAFT  
ASSESSMENT REPORT**

Drinking Water Source Protection, related to Ontario's Clean Water Act, is a provincially-funded initiative designed to protect the quality and quantity of our municipal drinking water sources.

The North Bay-Mattawa Source Protection Committee has completed the Draft Assessment Report, summarizing the technical reports for the source drinking water in Callander, Mattawa, North Bay, Powassan, South River and Trout Creek. The Report identifies the vulnerable areas for each source as well as the threats to the quantity and/or quality of the drinking water source.

The Public is invited to view the Draft Assessment Report and provide comments by August 31, 2010.

---

View the North Bay-Mattawa  
Source Protection Area  
Draft Assessment Report  
online at [www.actforcleanwater.ca](http://www.actforcleanwater.ca),  
at NBMCA office in North Bay,  
and at  
Municipal Offices & Libraries in  
Callander Mattawa  
North Bay Powassan  
South River  
Trout Creek (library only)

Send Comments to  
Barb Groves, Chair  
Source Protection Committee at  
email: [dwscomments@nbmca.on.ca](mailto:dwscomments@nbmca.on.ca)  
online: [www.actforcleanwater.ca](http://www.actforcleanwater.ca)  
mail: North Bay-Mattawa Source Protection  
Committee  
15 Janey Ave., North Bay, ON P1C 1N1



(705) 474-5420  
[www.actforcleanwater.ca](http://www.actforcleanwater.ca)  
[dwscomments@nbmca.on.ca](mailto:dwscomments@nbmca.on.ca)

## **POWASSAN DRINKING WATER SOURCE**

### **Excerpt from Draft Assessment Report**

*"The Municipality of Powassan draws its municipal drinking water from two wells near Genesee Creek. There is a clay aquitard throughout much of the study area that provides significant protection to the aquifer from surface contaminants.*

*A Wellhead Protection Area (WHPA) divided into areas of varying vulnerability was identified for the municipal supply. The procedure used computer modelling to determine the length of time it would take a waterborne contaminant to reach the wellhead and also assessed the degree of protection provided by the soil from contaminants moving down from the surface.*

*There are two septic systems located on properties within 100 m of the wellhead (see over) which are automatically classified as posing significant pathogen threats. During the planning phase of the program, when policies are being developed to ensure the ongoing protection of the water supply, more specific circumstances including the effectiveness of the existing aquitard will be evaluated and considered."*

You are invited to attend a public meeting or view the Draft Assessment Report and provide your comments to the Source Protection Committee by August 31, 2010.

Any questions, please call Sue Miller, Source Protection Project Manager 705-474-5420 or email [dwscomments@nbmca.on.ca](mailto:dwscomments@nbmca.on.ca)

---

## **Public Meetings on Assessment Report**

will be held:

### **Thursday, August 19, 2010**

5-8:30 PM Open House: Information Display all systems  
7 PM Presentation: Callander, North Bay & Mattawa  
Callander Legion Branch 445, Lansdowne St. Callander

### **Tuesday, August 24, 2010**

5-8:30 PM Open House : Information Displays all systems  
7 PM Presentation: Powassan, South River & Trout Creek  
The Friendly Circle Senior's Drop-in, 10 Isabella,  
South River, ON

Powassan Adjusted Vulnerability Scores - Report Figure 7-4c (expanded)  
 The 100m buffer around each wellhead is mandated to have the highest vulnerability score, and most threats located in that area will be significant for that reason.



**9. Summary of public comments and responses as required under Regulation 287/07 (General) of the Clean Water Act, 2006, Section 15 (5).**

**North Bay-Mattawa Source Protection Area  
Draft Assessment Report  
Summary of Public Comments Received**

Commenting period: July 26-August 31,  
2010 (35 days)

Notice Published online: July 26, 2010

Notice Published in a newspaper with  
sufficient local coverage: August 3, 2010

Official Public meeting on the Draft  
Assessment Report: August 24, 2010  
(South River)

Second Public meeting on the Draft  
Assessment Report: August 19, 2010  
(Callander)

**Statistics:**

Forms returned: 1

Phone Calls Received: 2

Emails Received: 4

Requests for notice: 2

Attendees – Aug 24: 7      Aug 19: 10

**Summary of Comments + Responses:**

**2010/08/11:** A forestry operator emailed requesting notification of information being available during the continuing process and asked about the impacts that a Source Protection Plan might have on the forestry operation.

**Response:** The operator was given information about the list of activities prescribed to be threats, and staff indicated that ancillary operations were more likely to be considered threats. Since the operator is also active in Callander, the issue of phosphorous contributions was also mentioned.

**2010/08/16:** A lumber mill operator from the South River area called out of concern that his business would be affected by the policies which would be created.

**Response:** Staff explained the process of vulnerability scoring, as the operator identified that he was further back from the intake than were other activities. Staff explained that since the operation was not identified as an existing significant threat, it is not likely that policies would be created that restrict the operation of the facility. Further investigation by staff revealed that a portion of the operation was contained within one of the IPZ-3 sub-zones, and that there is a low probability of achieving a significant threat on the property.

**2010/08/17:** A Callander resident sent an email relating to the water quality of a private well and concern over possible septic contamination on Greenhill Point (Callander Bay). He requested municipal services for the area.

**Response:** Staff members are responding to the concern by providing information about the WellAware program and well inspections. The correspondence will be forwarded to Callander, the NBPSDHU, and MOE. Provision of services is a municipal decision.

**2010/08/18:** In response to a notice sent by email to area stakeholders, a resident referred staff to comments which she had been made during the consultation for the draft version of the Callander water quality and risk assessment study (May and June, 2009).

**Response:** Staff reviewed the comments to determine how they had been addressed as a part of the draft reporting process and responded to the concerns. Some of the comments were addressed in subsequent report revisions (historical uses considered for their impacts on water quality, revisions for wording of contributing watersheds, etc). In addition, a comment about the timing of sampling on the Bay in relation to sewage lagoon discharges was taken into consideration for the 2010 sampling program.

**2010/08/18:** A resident of South River expressed continuing concern for storage of materials on a business property located in close proximity to an identified transport pathway. At the time of the original comment (October, 2009), the comment was forwarded to Ministry of the Environment abatement staff.

**Response:** Staff inquired about the comment again with MOE Abatement staff. There is a recommendation for ongoing monitoring of the site to ensure compliance, but the majority of the activities do not constitute a waste facility and the vulnerability of the area does not create a scenario for a significant threat status.

**2010/08/19:** A resident of Callander submitted a comment at the public meeting in Callander suggesting a location of concern in the upper Wasi watershed which he believed should be included in a phosphorous study.

**Response:** Staff will verify with the consultant that this area was/is being considered as a part of the Phosphorous Budget.

**2010/08/31:** The Ministry of the Environment technical staff provided informal comments on the Draft Assessment Report which were intended to have the Proposed Assessment Report meet all the legislative requirements. Comments were labeled as “Legislative Requirement”, “Recommendation” and “Suggestion” in order to prioritize changes in an efficient manner.

**Response:** Staff will prioritize updates for the Proposed Assessment Report in order to first meet the legislative requirements and will likely also be able to make most of the recommended (guidance) and suggested (general) edits.

**10. Summary of municipal concerns which have not been resolved to the satisfaction of the municipalities, required under The Clean Water Act, 2006, Clause 16 (a).**

In accordance with clause 16(a) of the *Clean Water Act, S.O. 2006*, the North Bay-Mattawa Source Protection Committee did not receive comments from the municipalities within the Source Protection Area that were not resolved to the municipalities' satisfaction.

**11. Summary of band council concerns which have not been resolved to the satisfaction of the band councils identified in the Approved Terms of Reference, required under Ontario Regulation 287/07 of the Clean Water Act, 2006, Clause 16 (a).**

In accordance with clause 16 (a) of O. Reg 287/07 (General) of the *Clean Water Act, S.O. 2006*, the North Bay-Mattawa Source Protection Committee did not receive comments from the band councils identified within the Approved Terms of Reference that were not resolved to the band council's satisfaction.

12. Copy of Notice sent to Tedd Briggs, Lake Huron area LaMP co-ordinator:

**Robert Pringle**

---

**From:** Robert Pringle  
**Sent:** Friday, July 30, 2010 3:20 PM  
**To:** 'ted.briggs@ontario.ca'  
**Cc:** Sue Buckle; Sue Miller; Barbara Groves  
**Subject:** North Bay-Mattawa Draft Assessment Report

Mr. Briggs,

As you are the co-ordinator for the Lakewide Management Plan for Lake Huron, we received advice from Martin Keller on June 7, 2010 that it would be in our best interest to notify you of the posting of our Draft Assessment Report since part of our Source Protection Area has watersheds which drain to Lake Nipissing and thus to Lake Huron via the French River and Georgian Bay. The Draft Assessment Report was available online as of Monday, July 26, 2010. Comments on the Draft Assessment Report for the North Bay-Mattawa Source Protection Area close on August 31, 2010.

Our Report is available from <http://actforcleanwater.ca/index.php?page=assessment-report-2>

Also the document is broken into sections here: <http://actforcleanwater.ca/index.php?page=assessment-report--test> but please be advised that the formatting of that hyperlink may be changed in the coming weeks.

If you would benefit from a hard copy of the report, please advise Robert Pringle by replying to this message, and we will have a copy delivered next week.

Thank-you,

**Robert Pringle, B.E.S.**

*Source Protection Planner*  
North Bay-Mattawa Conservation Authority  
[RobertPr@nbmca.on.ca](mailto:RobertPr@nbmca.on.ca)

15 Janey Avenue  
North Bay, ON P1C 1N1  
Phone: (705) 474-5420  
Fax: (705) 474-9793

**13. Ministry of Environment staff commented through the Liaison Officer for the North Bay-Mattawa SPC that certain maps which were identified as being difficult to read should be posted for the public in larger format. Once the maps were posted, it was also recommended that a notice be published online inviting public comment on the identified maps. This was completed on Friday, September 10, 2010, and running until Wednesday, September 15, 2010.**





[DNWSP Home](#) | [Contact Us](#) | [Source Water Protection Committee](#) | [Protecting Your Water](#) | [General Information](#) | [Developing The Plan](#) | [News & Events](#) | [NBMCA](#)

**Calendar of Events**

September 2010

Sun	Mon	Tue	Wed	Thu	Fri	Sat
		1	2	3	4	
5	6	7	8	9	10	11
12	13	14	15	16	17	18
19	20	21	22	23	24	25
26	27	28	29	30		

[Join our Mailing List](#)

[Send Your Comments](#)

**Education & Outreach**

To find out more about how you can protect your drinking water source, please browse our website or contact us directly.

- [Newsletters](#)
- [Resources](#)
- [Facts](#)
- [Events](#)

**Assessment Report**

**Notice of Additional Consultation:** In order to fulfill requirements for public consultation, the Ministry of the Environment has requested an additional comment period be made available for Appendix A – Selected Maps. Please review the selected maps posted below in original .JPEG format, and note their locations within the context of the Draft Assessment Report. Comments on these maps can be submitted to the SPC Chair, Barbara Groves via [dawsp.comments@nbmca.on.ca](mailto:dawsp.comments@nbmca.on.ca). The commenting period is from Friday, September 10, 2010 to Wednesday, September 15, 2010, 4:30 PM.

[Table of Contents, Lists of Figures, Tables & Appendices & Executive Summary \(215kb\)](#)

CHAPTER 1: Introduction (410 kb)

CHAPTER 2: Regional Overview (17 megs)

- Watershed Characteristics (13 megs)
- Conceptual Water Budget (530kb)
- Tier One Water Quantity Analysis (1.5 megs)
- Significant Groundwater Recharge Areas (SGRAs) (1 meg)
- Highly Vulnerable Aquifers (HVAs) (800 kb)
- Climate Change (126 kb)
- Great Lakes Considerations (125 kb)
- Managed Lands & Livestock Density (4 megs)

CHAPTER 3: Explanation of Methodology

- Surface Water Systems Methodology (100 kb)
- Ground Water Systems Methodology (80 kb)

CHAPTER 4: Municipality of Callander (1.6 megs)

CHAPTER 5: Town of Mattawa (2 megs)

CHAPTER 6: City of North Bay (3.7 megs)

CHAPTER 7: Municipality of Powassan (2.5 megs)

CHAPTER 8: Village of South River (2 megs)

CHAPTER 9: Community of Trout Creek (3 megs)

KEY DOCUMENTS & BIBLIOGRAPHY (70 kb)

GLOSSARY (130kb)

APPENDIX A – Selected Maps (175 kb)

The following maps, included in the Draft Assessment Report, are reprinted here in larger format for ease of view:

- Figure 2-20. Significant Groundwater Recharge Areas & Vulnerability - 822kb
- Figure 2-21. Highly Vulnerable Aquifers (HVA) - 837kb

**Meeting Notice!**

The meeting scheduled in South River, mentioned on pages 13 and 19 of the report as being Tuesday, August 17 has been rescheduled, and a location is confirmed. The meeting will occur on Tuesday, August 24, 2010, at the Friendly Circle Senior's Drop-in, 10 Isabella, South River. The meeting time will remain 5pm Open House, 7pm Presentation.

The meeting scheduled for Thursday, August 19 in Callander will be held at the Callander Legion on Lansdowne St. The meeting time will remain 5pm Open House, 7pm Presentation.

- Figure 4-5. Callander IPZ 1, 2, and 3 - 11 megs
- Figure 4-6. Callander Bay IPZ-3 Area Vulnerability Factors - 11 megs
- Figure 4-7. Location of Significant Threats Related to Phosphorous and Contributing to the Issue, Microcystin in the Callander Issue Contributing Area - 11 megs
- Figure 6-1. North Bay Significant Groundwater Recharge Areas (SGRA) - 200kb
- Figure 8-5. IP-3 Subzones and Vulnerability (South River) - 913kb

[APPENDIX B - Provincial Table of Circumstances - external link](#)

[APPENDIX C - Table of Threats - external link](#)

[APPENDIX D – Consultations \(20 kb\)](#)



Made possible through the support of the Government of Ontario



Site Map | © Copyright 2009-2010 www.actforcleanwater.ca : Website designed and maintained by VS Group: webwork@vsgroup.ca

## Process Followed for Posting of the 2011 Updated Assessment Report

### Contents:

- 1) Summary of how the requirements were met.
- 2) Posted Notice on the [www.actforcleanwater.ca](http://www.actforcleanwater.ca) website
- 3) Copy of Notice published in the North Bay Nugget, Mattawa Recorder and Almaguin News.
- 4) Copy of Notice sent to affected municipalities within the Source Protection Area.
- 5) Copy of Notice sent to remaining municipalities within the Source Protection Area.
- 6) Copy of letters sent to affected stakeholders.
- 7) Comments submitted by the Source Protection Authority on the Updated Assessment Report.

### 1) Summary of how the requirements were met.

The Notice and the electronic version of the Updated Assessment Report were posted online at [www.actforcleanwater.ca](http://www.actforcleanwater.ca) on May 13, 2011. A hard copy of the Updated Assessment Report was made available at the North Bay-Mattawa Conservation Authority offices. A Notice was published in all local newspapers (see 3) informing members of the public of these locations as follows:

- North Bay Nugget: Wednesday May 18, 2011
- Almaguin News: Thursday May 19, 2011
- Mattawa Recorder: Sunday May 22, 2011

Notice letters were also received by the following groups:

- Municipalities: City of North Bay, Municipality of Callander, Municipality of Powassan, Village of South River, Town of Mattawa, and the Townships of Papineau-Cameron, Bonfield, Calvin, Machar, Strong, Joly, Nipissing, Mattawan, Chisholm and East Ferris.
- Ministry of Transportation
- Canadian National Railway

The posting period ended on June 13, 2011. No comments were received during this time.

2) Posted Notice on the [www.actforcleanwater.ca](http://www.actforcleanwater.ca) website

Act for Clean Water - Updated Assessment Report



DWSP Home | Contact Us | Source Water Protection Committee | Protecting Your Water | General Information | Developing The Plan | News & Events | NBMCA

Calendar of Events

June 2011

Sun	Mon	Tue	Wed	Thu	Fri	Sat
			1	2	3	4
5	6	7	8	9	10	11
12	13	14	15	16	17	18
19	20	21	22	23	24	25
26	27	28	29	30		

Click here to see the complete calendar

[Join our Mailing List](#)

[Send Your Comments](#)

Education & Outreach

To find out more about how you can protect your drinking water source, please browse our website or contact us directly.

- Newsletter
- Resources
- Facts
- Events

## Updated Assessment Report

[Public Notice of Posting \(69 kb PDF\)](#)

[Updated Assessment Report \(11.6 mb PDF\)](#)

\* This Full Version has compressed maps for optimized downloading. For full quality, refer to the 'Chapter Breakdown' below.

[Chapter Breakdown \(link\)](#)

The Proposed Assessment Report was approved by the Director of the Source Protection Programs Branch on May 16, 2011. The Clean Water Act requires the committee to update an assessment report when the committee becomes aware that the assessment report is no longer accurate or complete.

In the time since the Proposed Assessment Report was submitted to the MOE for approval, new and updated information was received, notably MOE's approval of the addition of Transportation of Hazardous Substances as a local drinking water threat. This new information is included in the Updated Assessment Report (UAR) which is now being posted for public comment for a 30-day period. The UAR also incorporates a number of changes in wording intended to improve clarity; and revised analysis in three areas resulted in minor reductions in vulnerability scores.

You can view or download the Updated Assessment Report in its entirety or by Chapter using the links above.

Public comment on the Updated Assessment Report is invited. The comment period is 30 days from May 13, 2011 to June 13, 2011. Commenting will close at 4:30 PM on June 13, 2011.

If you need assistance accessing the Report or would like a hard copy or electronic (CD or DVD) version, please contact the Source Protection Team at [dwsp.comments@nbmca.on.ca](mailto:dwsp.comments@nbmca.on.ca) or call 705-474-5420.

The primary goal of the Clean Water Act is to protect the sources of municipal drinking water from contamination and overuse. In order to properly protect drinking water, we need to understand what is going on in the surrounding watershed - both above ground as surface water and below ground and groundwater. The Assessment Report is a technical document that provides the scientific foundation for the source protection planning process.

Commenting on the Updated Assessment Report! Comments on the Updated Assessment Report are being requested. The deadline is June 13, 2011 at 4:30 PM

[dwsp.comments@nbmca.on.ca](mailto:dwsp.comments@nbmca.on.ca)

Barbara Groves, Chair  
Source Protection Committee  
c/o NBMCA  
15 Janey Ave.  
North Bay, ON  
P1C 1N1  
Fax: (705) 474-9793



Made possible through the support of the Government of Ontario



- 3) Copy of Notice published in the North Bay Nugget, Mattawa Recorder and Almaguin News to notify stakeholders.

North Bay-Mattawa Source Protection Area

## Notice of Posting Updated Assessment Report for Drinking Water Source Protection

Callander, Mattawa, North Bay, Powassan, South River and Trout Creek

An Updated Assessment Report (UAR), which identifies the vulnerable areas as well as the threats to the quantity and/or quality of the drinking water sources in the North Bay-Mattawa Source Protection Area (NBMSPA), is now available for public review and comment.

The UAR can be viewed on the NBMSPA website: [www.actforcleanwater.ca](http://www.actforcleanwater.ca). A hard copy is available for review at the North Bay-Mattawa Conservation Authority office in North Bay. CD copies are also available from the NBMCA on request. Should you have any questions or concerns please contact: Sue Miller, Project Manager, at 705-474-5420, [suem@nbmca.on.ca](mailto:suem@nbmca.on.ca)

The Updated Assessment Report:

- includes the addition of Transportation of Hazardous Substances as a local drinking water threat. This threat is considered significant within certain vulnerable areas of the Callander, Mattawa, Powassan, South River and Trout Creek drinking water systems (inserted in Chapters 4-10, and the Director's Approval was added to the UAR as Appendix G).
- clarifies certain technical processes that were used in the determination of vulnerable areas, and vulnerability scoring, based on comments on the Proposed Assessment Report
- improves legibility of some of the Assessment Report mapping, based on comments from the Ministry of Environment
- corrects minor clerical omissions to various tables, some links and texts, with no changes to the overall results of the Assessment Report.

The Public is invited to view the Updated Assessment Report and provide comments by June 13, 2011. Written comments may be directed to:

Barbara Groves, Chair, North Bay-Mattawa Source Protection Committee  
c/o North Bay-Mattawa Conservation Authority  
15 Janey Avenue, North Bay, ON P1C 1N1 Fax: 705-474-9793  
Email: [dwsp.comments@nbmca.on.ca](mailto:dwsp.comments@nbmca.on.ca)



#### 4) Example of Memo sent to affected Municipalities.



# NOTICE

**To:** Municipality of Powassan  
**From:** Barbara Groves, Chair, North Bay-Mattawa Source Protection Committee  
**CC:** North Bay –Mattawa Source Protection Authority, Sue Miller  
**Date:** May 13, 2011  
**Pages:** 2 + Attached  
**Re:** Posting of Updated Assessment Report for the North Bay-Mattawa Source Protection Area and Notice to Affected Landowners

---

We wish to advise your municipality about the posting of the Updated Assessment Report for the North Bay-Mattawa Source Protection Area on May 13, 2011 and give notice that a significant threat activity is or could be occurring on municipally-owned roadways.

**This letter serves as your official notice under Ontario Regulation 287/07 (see “Notification” below).**

#### **Background**

Ontario's *Clean Water Act, 2006* was a legislative response to Justice O'Connor's 2002 Inquiry into the events of the Walkerton tragedy. The resulting Source Protection Planning process is guided by the Ministry of the Environment (MOE) and implemented on a watershed basis through Conservation Authorities in Ontario. The process is supported locally through the Source Protection Authority (municipal delegates to the Authority Board) and Source Protection Committee (appointed members representing the public at-large, commercial/industrial, transportation, agriculture, and municipal interests).

The Source Protection Committee is responsible for the creation of an Assessment Report which identifies vulnerable areas surrounding municipal water supply intakes and wells, and threats to the source water.

#### **Updates to the Assessment Report**

In the time since the Proposed Assessment Report was submitted to the MOE for approval, new and updated information was received, notably MOE's approval of the addition of Transportation of Hazardous Substances as a local drinking water threat. This new information is included in the Updated Assessment Report (UAR) which is now being posted for public comment for a 30-day period. The UAR also incorporates a number of changes in wording intended to improve clarity; and revised analysis in three areas resulted in minor reductions in vulnerability scores.

#### **Notification to Affected Landowners**

Ontario Regulation 287/07 requires that official notice of the posting of the Updated Assessment Report be given to landowners affected by the proposed changes. The Transportation of Hazardous Substances is considered a significant threat within the Powassan Wellhead Protection Area A and B1 and the Trout Creek Wellhead Protection Area A and B. As such, certain substances being transported along municipal roadways are considered a significant threat to the municipal water supply. For more information, please see attached excerpt from the Updated Assessment Report.

**Access to the Updated Assessment Report**

The Updated Assessment Report has been posted on the Drinking Water Source Protection website: [www.actforcleanwater.ca](http://www.actforcleanwater.ca). A hard copy is available for review at the North Bay-Mattawa Conservation Authority office in North Bay. CD copies are also available from the NBMCA on request.

To aid you in your review, the section pertaining specifically to the Transportation of Hazardous Substances within the Powassan and Trout Creek Wellhead Protection Area is attached to this notice.

**Providing Comments on the Draft Updated Assessment Report**

Written comments may be directed to the North Bay-Mattawa Source Protection Committee via:

Barbara Groves, Chair, North Bay-Mattawa Source Protection Committee  
c/o North Bay-Mattawa Conservation Authority  
15 Janey Avenue, North Bay, ON P1C 1N1  
Fax: 705-474-9793  
Email: [dwsp.comments@nbmca.on.ca](mailto:dwsp.comments@nbmca.on.ca)

Comments on the Draft Updated Assessment Report will close on **June 13, 2011**. All comments received during the comment period will be considered in the finalization of the Updated Assessment Report.

Sincerely,



Barbara Groves  
Chair, North Bay-Mattawa Source Protection Committee

**Municipal mailing list:**

Clerk  
Municipality of Callander  
280 Main St N  
PO Box 100  
Callander, ON P0H 1H0

Clerk  
Municipality of Powassan  
466 Main St  
PO Box 250  
Powassan, ON P0H 1Z0

Clerk  
Town of Mattawa  
160 Water Street  
PO Box 390  
Mattawa, ON P0H 1V0

Clerk  
Village of South River  
63 Marie Street  
P.O. Box 310  
South River, ON P0A 1X0

5) Example of Memo sent to remaining municipalities within the Source Protection Area.



# NOTICE

**To:** Municipal Clerks/CAO's, Mayors and Councillors in the North Bay-Mattawa Source Protection Area  
**From:** Barbara Groves, Chair, North Bay-Mattawa Source Protection Committee  
**CC:** North Bay –Mattawa Source Protection Authority, Sue Miller  
**Date:** May 13, 2011  
**Pages:** 2 + Attached  
**Re:** Posting of Updated Assessment Report for the North Bay-Mattawa Source Protection Area and Notice to Affected Landowners

---

We wish to advise your municipality about the posting of the Updated Assessment Report for the North Bay-Mattawa Source Protection Area on May 13, 2011.

**This letter serves as your official notice under Ontario Regulation 287/07 (see "Notification" below).**

## Background

Ontario's *Clean Water Act, 2006* was a legislative response to Justice O'Connor's 2002 Inquiry into the events of the Walkerton tragedy. The resulting Source Protection Planning process is guided by the Ministry of the Environment (MOE) and implemented on a watershed basis through Conservation Authorities in Ontario. The process is supported locally through the Source Protection Authority (municipal delegates to the Authority Board) and Source Protection Committee (appointed members representing the public at-large, commercial/industrial, transportation, agriculture, and municipal interests).

The Source Protection Committee is responsible for the creation of an Assessment Report which identifies vulnerable areas surrounding municipal water supply intakes and wells, and threats to the source water.

## Updates to the Assessment Report

In the time since the Proposed Assessment Report was submitted to the MOE for approval, new and updated information was received, notably MOE's approval of the addition of Transportation of Hazardous Substances as a local drinking water threat. This new information is included in the Updated Assessment Report (UAR) which is now being posted for public comment for a 30-day period. The UAR also incorporates a number of changes in wording intended to improve clarity; and revised analysis in three areas resulted in minor reductions in vulnerability scores.

## Notification to Affected Landowners

Ontario Regulation 287/07 requires that official notice of the posting of the Updated Assessment Report be given to landowners affected by the proposed changes. The Transportation of Hazardous Substances is considered a significant threat within certain vulnerable areas of the Callander, Mattawa, Powassan, South River and Trout Creek drinking water systems. As such, certain substances being transported along municipal roadways are considered a significant threat to the municipal water supply in these areas.



---

**Access to the Updated Assessment Report**

The Updated Assessment Report has been posted on the Drinking Water Source Protection website: [www.actforcleanwater.ca](http://www.actforcleanwater.ca). A hard copy is available for review at the North Bay-Mattawa Conservation Authority office in North Bay. CD copies are also available from the NBMCA on request.

**Providing Comments on the Draft Updated Assessment Report**

Written comments may be directed to the North Bay-Mattawa Source Protection Committee via:

Barbara Groves, Chair, North Bay-Mattawa Source Protection Committee  
c/o North Bay-Mattawa Conservation Authority  
15 Janey Avenue, North Bay, ON P1C 1N1  
Fax: 705-474-9793  
Email: [dwsp.comments@nbmca.on.ca](mailto:dwsp.comments@nbmca.on.ca)

Consultation on the Draft Updated Assessment Report will close on **June 13, 2011**. All comments received during the comment period will be considered in the finalization of the Updated Assessment Report.

Sincerely,



Barbara Groves  
Chair, North Bay-Mattawa Source Protection Committee

**Municipal mailing list:**

Clerk Township of Bonfield 365 Hwy 531 Bonfield, ON P0H 1E0	Clerk Municipality of Calvin 1355 Peddlers Drive, RR#2 Mattawa, ON P0H 1V0	Clerk City of North Bay 200 McIntyre St E PO Box 360 North Bay, ON P1B 8H8
Clerk Township of Chisholm 2847 Chiswick Line Powassan, ON P0H 1Z0	Clerk Township of East Ferris 390 Hwy 94 PO Box 85 Corbeil, ON P0H 1K0	Clerk Township of Joly 871 Forest Lake Rd PO Box 519 Sundridge, ON P0A 1Z0
Clerk Township of Machar 73 Municipal Rd N PO Box 70 South River, ON P0A 1X0	Clerk Township of Mattawan PO Box 610 Mattawa, ON P0H 1V0	Clerk Township of Nipissing General Delivery, 45 Beatty Street Nipissing, ON P0H 1W0
Clerk Township of Papineau-Cameron 4861 Hwy 17 West PO Box 630 Mattawa, ON P0H 1V0	Clerk Township of Strong 1713 Hwy 11 PO Box 1120 Sundridge, ON P0A 1Z0	

## 6) Copy of letters sent to affected landowners.



May 13, 2011

Gary Todd  
Design and Contract Standards Office  
Ministry of Transportation  
Garden City Tower, 6th Flr  
301 St Paul St  
St Catharines ON L2R7R4

Dear Mr. Todd,

We wish to advise the Ministry of Transportation about the posting of the Updated Assessment Report for the North Bay-Mattawa Source Protection Area on May 13, 2011.

The *Clean Water Act, 2006* prompted the formation of the North Bay-Mattawa Source Protection Committee. The Source Protection Committee (SPC) is responsible for the creation of an Assessment Report, which identifies vulnerable areas surrounding municipal drinking water supply intakes and wells and assesses threats to drinking water within these vulnerable areas.

The SPC is concerned about the risk posed by the transportation of hazardous substances along certain transportation corridors to the drinking water intakes and wells in the North Bay-Mattawa Source Protection Area. The SPC has received approval from the Director of the Source Protection Programs Branch of the Ministry of Environment (MOE) to include the transportation of hazardous substances as a local threat to drinking water in the North Bay-Mattawa Source Protection Area. As such, the Assessment Report is being updated to include this information.

The transportation of hazardous substances is considered a significant threat within the Powassan and Trout Creek Wellhead Protection Areas, both located within the Municipality of Powassan. As such, certain substances being transported along a small section of Highway 11 near Powassan and along Hwy 522 in Trout Creek are considered a significant threat to the water supply. For more information, please see attached excerpt from the Updated Assessment Report.

Please be advised that the Source Protection Committee has started development of the Source Protection Plan which will consist of policies to reduce the risk posed by threats to water quality and quantity. The Plan must contain policies to address all existing and potential significant drinking water threats as identified in the Assessment Report.

Stakeholder consultation will take place throughout the planning phase. We will provide notification when transportation policies are being developed and provide you with an opportunity to comment.

The Updated Assessment Report has been posted on the Drinking Water Source Protection website: [www.actforcleanwater.ca](http://www.actforcleanwater.ca). A hard copy is available at the North Bay-Mattawa Conservation Authority office in North Bay. CD copies are also available from the NBMCA on request.

To aid you in your review, the section from the Assessment Report pertaining specifically to the transportation of hazardous substances within the Powassan and Trout Creek Wellhead Protection Areas is attached to this notice.

**Providing Comments on the Updated Assessment Report**

Written comments may be directed to the North Bay-Mattawa Source Protection Committee via:

Barbara Groves, Chair, North Bay-Mattawa Source Protection Committee  
c/o North Bay-Mattawa Conservation Authority  
15 Janey Avenue, North Bay, ON P1C 1N1  
Fax: 705-474-9793  
Email: [dwsp.comments@nbmca.on.ca](mailto:dwsp.comments@nbmca.on.ca)

Comments on the Updated Assessment Report will close on **June 13, 2011**. All comments received during the comment period will be considered in the finalization of the Updated Assessment Report.

Should you have any questions or concerns please contact Sue Miller, Project Manager, at 705-474-5420, [suem@nbmca.on.ca](mailto:suem@nbmca.on.ca).

Sincerely,



Barbara Groves  
Chair, North Bay-Mattawa Source Protection Committee



May 13, 2011

Danny Simpson  
Asst. Vice-President Safety and Environment Design and Contract Standards Office  
Canadian National Railway  
935 de La Gauchetière Street West  
Montreal, QC H3B 2M9

Dear Mr. Simpson,

We wish to advise the Canadian National Railway about the posting of the Updated Assessment Report for the North Bay-Mattawa Source Protection Area on May 13, 2011.

The *Clean Water Act, 2006* prompted the formation of the North Bay-Mattawa Source Protection Committee. The Source Protection Committee (SPC) is responsible for the creation of an Assessment Report, which identifies vulnerable areas surrounding municipal drinking water supply intakes and wells and assesses threats to drinking water within these vulnerable areas.

The SPC is concerned about the risk posed by the transportation of hazardous substances along certain transportation corridors to the drinking water intakes and wells in the North Bay-Mattawa Source Protection Area. The committee has received approval from the Director of the Source Protections Programs Branch of the Ministry of Environment (MOE) to include the transportation of hazardous substances as a local threat to drinking water in the North Bay-Mattawa Source Protection Area. As such, the Assessment Report is being updated to include this information.

The transportation of hazardous substances is considered a significant threat within Trout Creek Wellhead Protection Area, located in the Municipality of Powassan. As such, certain substances being transported along a section of rail near Trout Creek are considered a significant threat to the water supply. For more information, please see attached excerpt from the Updated Assessment Report.

Please be advised that the Source Protection Committee has started development of the Source Protection Plan which will consist of policies to reduce the risk posed by threats to water quality and quantity. The Plan must contain policies to address all existing and potential significant drinking water threats as identified in the Assessment Report.

Stakeholder consultation will take place throughout the planning phase. We will provide notification when transportation policies are being developed and provide you with an opportunity to comment.

The Updated Assessment Report has been posted on the Drinking Water Source Protection website: [www.actforcleanwater.ca](http://www.actforcleanwater.ca). A hard copy is available at the North Bay-Mattawa Conservation Authority office in North Bay. CD copies are also available from the NBMCA on request.

To aid you in your review, the section from the Updated Assessment Report pertaining specifically to the transportation of hazardous substances within the Trout Creek Wellhead Protection Areas is attached to this notice.

**Providing Comments on the Updated Assessment Report**

Written comments may be directed to the North Bay-Mattawa Source Protection Committee via:

Barbara Groves, Chair, North Bay-Mattawa Source Protection Committee  
c/o North Bay-Mattawa Conservation Authority  
15 Janey Avenue, North Bay, ON P1C 1N1  
Fax: 705-474-9793  
Email: [dwsp.comments@nbmca.on.ca](mailto:dwsp.comments@nbmca.on.ca)

Comments on the Updated Assessment Report will close on **June 13, 2011**. All comments received during the comment period will be considered in the finalization of the Updated Assessment Report.

Should you have any questions or concerns please contact Sue Miller, Project Manager, at 705-474-5420, [suem@nbmca.on.ca](mailto:suem@nbmca.on.ca).

Sincerely,



Barbara Groves  
Chair, North Bay-Mattawa Source Protection Committee

**7) Comments submitted by the Source Protection Authority on the Updated Assessment Report.**

No formal comments were submitted by the Source Protection Authority on the Updated AR for the North Bay-Mattawa SP Area.

## Appendix E – Director Approval for use of Alternate Method for the Delineation of IPZ-3

Ministry of  
the Environment

Source Protection Programs  
Branch

8<sup>th</sup> Floor  
2 St. Clair Ave. West  
Toronto ON M4V 1L5

Ministère de  
l'Environnement

Direction des programmes de protection  
des sources

8<sup>e</sup> étage  
2, avenue St. Clair Ouest  
Toronto (Ontario) M4V 1L5



Log: ENV1174IT-2010-185

July 28, 2010

Ms. Barbara Groves  
Chair  
North Bay-Mattawa Source Protection Committee  
15 Janey Avenue  
North Bay ON P1C 1N1

Dear Ms. Groves:

I am responding to your July 27, 2010 letter regarding your request for Director's approval to use an alternate method for the delineation of IPZ-3 for the Municipality of Callander Intake, under Rule 15.1 of the Director's Technical Rules (Rules) for the completion of the assessment report under the *Clean Water Act* (CWA) for the North Bay-Mattawa source protection area.

### **Rule 70 - IPZ-3 Delineation for the Type-D Intake for the Municipality of Callander Intake**

As set out in your correspondence, the Callander intake is classified as Type D, inland water intake, located in the relatively isolated Callander Bay which is separated from the main basin of Lake Nipissing by a narrow channel.

Your letter states that the flow direction of Callander Bay is predominantly towards the west (i.e. into Lake Nipissing with little mixing of waters between the Bay and Lake Nipissing due to minor reversal flow). Due to the bathymetry of the Bay and shoreline configuration, the water movement is constrained from Lake Nipissing to the Bay. Also, your letter states that during high speed wind events the main flow direction is towards Lake Nipissing through the main channel and not from the Lake to the Bay.

The supporting documentation, including modeling exercises and water quality analysis for both Lake Nipissing and the Bay, indicates the water quality of Callander Bay is different from that of the Lake Nipissing.

We agree with your opinion that the vulnerable area for the Callander intake should be delineated according to Rule 70, as Callander Bay behaves as an inland lake with an outflow to the main body of Lake Nipissing.

Ms. Groves  
Page 2.

In accordance with my authority under Rule 15.1, I hereby provide Director's approval for the use of this alternate method for the Municipality of Callander Intake in the North Bay-Mattawa source protection area.

Your rationale for the use of this alternative method and how it was applied must be included in your assessment report. You must also attach a copy of this letter to assessment report.

We thank you for your efforts in completing the technical studies in support of the assessment report under the CWA. If you have any questions or require additional information, please contact our office.

Sincerely,



Ian Smith, Director  
Source Protection Programs Branch  
Ministry of the Environment

cc: Sue Miller, Project Manager  
Heather Malcolmson, Manager, Source Protection Planning  
Keith Willson, Manager, Source Protection Approvals  
Neil Gervais, Liaison Officer, Source Protection Implementation



## Appendix F – Enumeration of Circumstances Relating to Phosphorus in Callander in which Prescribed Activities would be Significant Threats

Prescribed Drinking Water Threat	Threat Sub category	Chemical Quantity Circumstance	Chemical Method of Release Circumstance	Number of Significant Threat Circumstances
The application of agricultural source material to land.	Application Of Agricultural Source Material (ASM) To Land	Where % of managed land of vulnerable area <40% and the NU/Acre of ML are <0.5 NU/acre.	Land application of agricultural source material	9
		Where % of managed land of vulnerable area <40% and the NU/Acre of ML are 0.5-1.0 NU/acre.		
		Where % of managed land of vulnerable area <40% and the NU/Acre of ML are >1.0 NU/acre.		
		Where % of managed land of vulnerable area 40-80% and the NU/Acre of ML are <0.5 NU/acre.		
		Where % of managed land of vulnerable area 40-80% and the NU/Acre of ML are 0.5-1.0 NU/acre.		
		Where % of managed land of vulnerable area 40-80% and the NU/Acre of ML are >1.0 NU/acre.		
		Where % of managed land of vulnerable area >80% and the NU/Acre of ML are <0.5 NU/acre.		
		Where % of managed land of vulnerable area >80% and the NU/Acre of ML are 0.5-1.0 NU/acre.		
		Where % of managed land of vulnerable area >80% and the NU/Acre of ML are >1.0 NU/acre.		
The application of commercial fertilizer to land.	Application Of Commercial Fertilizer To Land	Where % of managed land of vulnerable area <40% and the NU/Acre of ML are <0.5 NU/acre.	Commercial fertilizer is applied to land and may result in a release to groundwater or surface water	9
		Where % of managed land of vulnerable area <40% and the NU/Acre of ML are 0.5-1.0 NU/acre.		
		Where % of managed land of vulnerable area <40% and the NU/Acre of ML are >1.0 NU/acre.		
		Where % of managed land of vulnerable area 40-80% and the NU/Acre of ML are <0.5 NU/acre.		
		Where % of managed land of vulnerable area 40-80% and the NU/Acre of ML are 0.5-1.0 NU/acre.		
		Where % of managed land of vulnerable area 40-80% and the NU/Acre of ML are >1.0 NU/acre.		
		Where % of managed land of vulnerable area >80% and the NU/Acre of ML are <0.5 NU/acre.		
		Where % of managed land of vulnerable area >80% and the NU/Acre of ML are 0.5-1.0 NU/acre.		
		Where % of managed land of vulnerable area >80% and the NU/Acre of ML are >1.0 NU/acre.		

Prescribed Drinking Water Threat	Threat Sub category	Chemical Quantity Circumstance	Chemical Method of Release Circumstance	Number of Significant Threat Circumstances
<p>The application of non-agricultural source material to land.</p>	<p>Application Of Non-Agricultural Source Material (NASM) To Land (Including Treated Septage)</p>	<p>Where % of managed land of vulnerable area &lt;40% and the NU/Acre of ML are &lt;0.5 NU/acre.</p>	<p>Non-agricultural source material is applied to land and may result in a release to groundwater or surface water</p>	<p>9</p>
		<p>Where % of managed land of vulnerable area &lt;40% and the NU/Acre of ML are 0.5-1.0 NU/acre.</p>		
		<p>Where % of managed land of vulnerable area &lt;40% and the NU/Acre of ML are &gt;1.0 NU/acre.</p>		
		<p>Where % of managed land of vulnerable area 40-80% and the NU/Acre of ML are &lt;0.5 NU/acre.</p>		
		<p>Where % of managed land of vulnerable area 40-80% and the NU/Acre of ML are 0.5-1.0 NU/acre.</p>		
		<p>Where % of managed land of vulnerable area 40-80% and the NU/Acre of ML are &gt;1.0 NU/acre.</p>		
		<p>Where % of managed land of vulnerable area &gt;80% and the NU/Acre of ML are &lt;0.5 NU/acre.</p>		
		<p>Where % of managed land of vulnerable area &gt;80% and the NU/Acre of ML are 0.5-1.0 NU/acre.</p>		
		<p>Where % of managed land of vulnerable area &gt;80% and the NU/Acre of ML are &gt;1.0 NU/acre.</p>		
<p>The establishment, operation or maintenance of a system that collects, stores, transmits, treats or disposes of sewage.</p>	<p>Sewage System Or Sewage Works - Discharge Of Untreated Stormwater From A Stormwater Retention Pond</p>	<p>Where the drainage area is &lt;1 ha and the predominant land use is rural, agricultural, or low density residential.</p>	<p>A stormwater management facility designed to discharge stormwater to groundwater (through infiltration) or surface water</p>	<p>27</p>
		<p>Where the drainage area is 1 to &lt; 10 ha and the predominant land use is rural, agricultural, or low density residential.</p>		
		<p>Where the drainage area is 10-100 ha and the predominant land use is rural, agricultural, or low density residential.</p>		
		<p>Where the drainage area is &gt;100 ha and the predominant land use is rural, agricultural, or low density residential.</p>		
		<p>Where the drainage area is &lt;1 ha and the predominant land use is high density residential.</p>		
		<p>Where the drainage area is 1 to &lt; 10 ha and the predominant land use is high density residential.</p>		
		<p>Where the drainage area is 10-100 ha and the predominant land use is high density residential.</p>		
		<p>Where the drainage area is &gt;100 ha and the predominant land use is high density residential.</p>		
		<p>Where the drainage area is &lt;1 ha and the predominant land use is Industrial/Commerical</p>		

Prescribed Drinking Water Threat	Threat Sub category	Chemical Quantity Circumstance	Chemical Method of Release Circumstance	Number of Significant Threat Circumstances
		Where the drainage area is 1 to < 10 ha and the predominant land use is Industrial/Commerical		
		Where the drainage area is 10-100 ha and the predominant land use is Industrial/Commerical		
		Where the drainage area is >100 ha and the predominant land use is Industrial/Commerical		
	Sewage System Or Sewage Works - Industrial Effluent Discharges	Discharger is not a facility required to report through Environment Canada's National Pollutant Release Inventory for the parameter	Industrial Effluent is discharged to surface water	
		Discharger is a facility required to report through Environment Canada's National Pollutant Release Inventory for the parameter		
	Sewage System Or Sewage Works - Sanitary Sewers and related pipes	Sanitary sewer with a conveyance of 250 - 1,000 m3/d	All pipes that are moving human waste that are not part of plumbing (sanitary sewer trunks, mainlines, service connections)	
		Sanitary sewer with a conveyance of >1,000 - 10,000 m3/d		
		Sanitary sewer with a conveyance of >10,000 - 100,000 m3/d		
		Sanitary sewer with a conveyance of >100,000 m3/d		
	Sewage System Or Sewage Works - Septic System	Septic system that is subject to the Building Code.	Sewage system that is defined in O.Reg. 350 under the Building Code Act (on site septic system), except a holding tank, that may discharge to groundwater or surface water	
		Septic System is subject to the OWRA		
	Sewage System Or Sewage Works - Septic System Holding Tank	Septic system holding tank that is subject to the Building Code.	Sewage system (on site septic system) that requires or uses a holding tank as defined in O.Reg. 350 under the Building Code Act, that may discharge to groundwater or surface water	
		Septic System holding tank is subject to the OWRA		
	Sewage System Or Sewage Works - Sewage Treatment Plant Effluent Discharges (Includes Lagoons)	Sewage Treatment Plants that discharge treated effluent < 500 m3/d on an annual average	A sewage treatment plant effluent discharge, and the discharge is not a bypass. Plant is subject to the OWRA and requires a CofA	
		Sewage Treatment Plants that discharge treated effluent ≥500 m3/d but < 2,500 m3/d on an annual average		
		Sewage Treatment Plants that discharge treated effluent ≥2,500 m3/d or < 17,500 m3/d on an annual average		
		Sewage Treatment Plants that discharge treated effluent ≥17,500 m3/d or < 50,000 m3/d on an annual average		
		Sewage Treatment Plants that discharge treated effluent ≥50,000 m3/d on an annual average		
The establishment, operation or maintenance of	Application Of Untreated Septage To Land	Total application area < 1 ha	Hauled sewage is applied to land and may result in a release to groundwater or surface water	7
		Total application area 1 - 10 ha		
		Total application area > 10 ha		

Prescribed Drinking Water Threat	Threat Sub category	Chemical Quantity Circumstance	Chemical Method of Release Circumstance	Number of Significant Threat Circumstances			
a waste disposal site within the meaning of Part V of the Environmental Protection Act.	Storage, Treatment And Discharge Of Tailings From Mines	Discharger is not a facility required to report through Environment Canada's National Pollutant Release Inventory for the parameter	The mine tailings are stored in a pit				
			The mine tailings are stored using a surface impoundment				
		Discharger is a facility required to report through Environment Canada's National Pollutant Release Inventory for the parameter	The mine tailings are stored in a pit				
			The mine tailings are stored using a surface impoundment				
The handling and storage of commercial fertilizer.	Storage Of Commercial Fertilizer	where the quantity stored is <25L or < 25kg	The commercial fertilizer is stored at a facility where it is manufactured, distributed, or processed.	<b>8</b>			
			The commercial fertilizer is stored at a facility where it is sold or used for application at other sites. Except where it is manufactured or processed.				
		where the quantity stored is 25-250 L or 25-250 kg	The commercial fertilizer is stored at a facility where it is manufactured, distributed, or processed.				
			The commercial fertilizer is stored at a facility where it is sold or used for application at other sites. Except where it is manufactured or processed.				
		where the quantity stored is >250-2500 L or >250-2500 kg	The commercial fertilizer is stored at a facility where it is manufactured, distributed, or processed.				
			The commercial fertilizer is stored at a facility where it is sold or used for application at other sites. Except where it is manufactured or processed.				
		where the quantity stored is >2500 L or > 2500 kg	The commercial fertilizer is stored at a facility where it is manufactured, distributed, or processed.				
			The commercial fertilizer is stored at a facility where it is sold or used for application at other sites. Except where it is manufactured or processed.				
		The handling and storage of non-agricultural source material.	Storage of Non-Agricultural Source Material (NASM)		Mass of N in NASM < 0.5 tonnes	Where non-agricultural source material is stored at or above grade in a structure that is a permanent nutrient storage facility as defined under the Nutrient Management Act (O.Reg 267).	<b>12</b>
						Where non-agricultural source material is stored at or above grade in temporary field nutrient storage site as defined under the Nutrient Management Act (O.Reg 267).	

Prescribed Drinking Water Threat	Threat Sub category	Chemical Quantity Circumstance	Chemical Method of Release Circumstance	Number of Significant Threat Circumstances
		Mass of N in NASM < 0.5 tonnes	Where non-agricultural source material is stored below grade in a structure that is a permanent nutrient storage facility as defined under the Nutrient Management Act (O.Reg 267).	
			Where non-agricultural source material is stored partially below grade in a structure that is a permanent nutrient storage facility as defined under the Nutrient Management Act (O.Reg 267).	
		Mass of N in NASM is 0.5 to 5 tonnes	Where non-agricultural source material is stored at or above grade in a structure that is a permanent nutrient storage facility as defined under the Nutrient Management Act (O.Reg 267).	
			Where non-agricultural source material is stored at or above grade in temporary field nutrient storage site as defined under the Nutrient Management Act (O.Reg 267).	
			Where non-agricultural source material is stored below grade in a structure that is a permanent nutrient storage facility as defined under the Nutrient Management Act (O.Reg 267).	
			Where non-agricultural source material is stored partially below grade in a structure that is a permanent nutrient storage facility as defined under the Nutrient Management Act (O.Reg 267).	
		Mass of N in NASM >5 tonnes	Where non-agricultural source material is stored at or above grade in a structure that is a permanent nutrient storage facility as defined under the Nutrient Management Act (O.Reg 267).	
			Where non-agricultural source material is stored at or above grade in temporary field nutrient storage site as defined under the Nutrient Management Act (O.Reg 267).	

Prescribed Drinking Water Threat	Threat Sub category	Chemical Quantity Circumstance	Chemical Method of Release Circumstance	Number of Significant Threat Circumstances
			Where non-agricultural source material is stored below grade in a structure that is a permanent nutrient storage facility as defined under the Nutrient Management Act (O.Reg 267).	
			Where non-agricultural source material is stored partially below grade in a structure that is a permanent nutrient storage facility as defined under the Nutrient Management Act (O.Reg 267).	
The storage of agricultural source material.	Storage Of Agricultural Source Material (ASM)	The weight or volume of manure stored annually on a Farm Unit is sufficient to annually land apply nutrients at $\leq 0.5$ NU per acre of the farm units	Where agricultural source material is stored at or above grade in a structure that is a permanent nutrient storage facility as defined under the Nutrient Management Act (O.Reg 267)	<b>12</b>
			Where agricultural source material is stored at or above grade using a temporary field nutrient storage site as defined under the Nutrient Management Act (O.Reg 267).	
			Where agricultural source material is stored below grade in a structure that is a permanent nutrient storage facility as defined under the Nutrient Management Act (O.Reg 267)	
			Where agricultural source material is stored partially below grade in a structure that is a permanent nutrient storage facility as defined under the Nutrient Management Act (O.Reg 267)	
		The weight or volume of manure stored annually on a Farm Unit is sufficient to annually land apply nutrients at $>0.5$ and $\leq 1$ NU per acre of the farm	Where agricultural source material is stored at or above grade in a structure that is a permanent nutrient storage facility as defined under the Nutrient Management Act (O.Reg 267)	
		Where agricultural source material is stored at or above grade using a temporary field nutrient storage site as defined under the Nutrient Management Act (O.Reg 267).		

Prescribed Drinking Water Threat	Threat Sub category	Chemical Quantity Circumstance	Chemical Method of Release Circumstance	Number of Significant Threat Circumstances	
			Where agricultural source material is stored below grade in a structure that is a permanent nutrient storage facility as defined under the Nutrient Management Act (O.Reg 267)		
			Where agricultural source material is stored partially below grade in a structure that is a permanent nutrient storage facility as defined under the Nutrient Management Act (O.Reg 267)		
		The weight or volume of manure stored annually on a Farm Unit is sufficient to annually land apply nutrients at >1 NU per acre of the farm units	Where agricultural source material is stored at or above grade in a structure that is a permanent nutrient storage facility as defined under the Nutrient Management Act (O.Reg 267)		
			Where agricultural source material is stored at or above grade using a temporary field nutrient storage site as defined under the Nutrient Management Act (O.Reg 267).		
			Where agricultural source material is stored below grade in a structure that is a permanent nutrient storage facility as defined under the Nutrient Management Act (O.Reg 267)		
			Where agricultural source material is stored partially below grade in a structure that is a permanent nutrient storage facility as defined under the Nutrient Management Act (O.Reg 267)		
The use of land as livestock grazing or pasturing land, an outdoor confinement area or a farm-animal yard. O. Reg. 385/08, s. 3.	Management Or Handling Of Agricultural Source Material - Agricultural Source Material (ASM) Generation (Grazing and pasturing)	Where livestock density is <0.5 Nutrient Units per acre.	The use of land as livestock grazing or pasturing land, where agricultural source material may be generated, and may result in a release to land or water	6	
		Where livestock density is 0.5-1.0 Nutrient Units per acre.			
		Where livestock density is >1.0 Nutrient Units per acre.			
	Management Or Handling Of Agricultural Source Material - Agricultural Source Material (ASM) Generation (Yards or confinement)	Number of animals in the area can generate <120 NU/hectare of the area annually.			The use of land as an outdoor confinement area or a farm-animal yard, where agricultural source material may be generated, and may result in a release to land or water
		Number of animals in the area can generate >=120 and <=300 NU/hectare of the area annually.			
		Number of animals in the area can generate >300 NU/hectare of the area annually.			
<b>Total number of circumstances relating to significant drinking water threats that may contribute to phosphorus loading in Callander Bay:</b>				<b>99</b>	





## Appendix G – Director Approval of Transportation of Hazardous Substances as a Local Drinking Water Threat

Ministry of  
the Environment

Source Protection Programs  
Branch  
14<sup>th</sup> Floor  
40 St. Clair Ave. West  
Toronto ON M4V 1M2

Ministère de  
l'Environnement

Direction des programmes de protection  
des sources  
14<sup>e</sup> étage  
40, avenue St. Clair Ouest  
Toronto (Ontario) M4V 1M2



Log: ENV1174IT-2010-248

February 8, 2011

Ms. Barbara Groves  
Chair, North Bay-Mattawa Source Protection Committee  
15 Janey Avenue  
North Bay ON P1C 1N1


Dear Ms. Groves,

We are in receipt of your letter dated October 20, 2010. You have requested a Director's opinion regarding the addition of the transportation of hazardous substances as a local drinking water threat under Rule 119 of the technical rules. Table 1 provides details on activities that were considered.

In accordance with my authority under Rules 119 and 120 or 121, I hereby provide the following Director's opinion on the hazard rating related to the proposed activities and circumstance as per Table 2. The activity has been approved as a local threat in the North Bay-Mattawa Source Protection Area.

Your rationale for the inclusion of this local threat along with a copy of this letter must be included in your assessment report.

Sincerely,

  
Ian Smith, Director  
Source Protection Programs Branch  
Ministry of the Environment

C: Keith Willson, Manager, Source Protection Approvals  
Paul Heeney, Manager, Source Protection Implementation  
Heather Malcolmson, Manager, Source Protection Planning  
Katie Fairman, Supervisor, Source Protection Implementation  
Melanie Ward, Team Lead, Source Protection Approvals  
Neil Gervais, Liaison Officer, CRCA, Source Protection Implementation

**Table 1:  
ACTIVITY AND SUBCATEGORY**

Applicable to the North Bay-Mattawa Source Protection Area

Activity being added as a Local Threat: Transportation of hazardous substances. Chemicals concern:

1. Ammonium Nitrate
2. Ammonia
3. Formaldehyde
4. Hydrogen Peroxide
5. Methanol
6. Sodium Hydroxide
7. Sulphuric acid
8. Sulphur Dioxide
9. Copper
10. BTEX (includes aviation fuel, gasoline, fuel oil)
11. Petroleum hydrocarbons (includes aviation fuel, gasoline, fuel oil)

Activity being added as a Local Threat: Transportation of Septage.  
12. Pathogens

**Table 2:  
CIRCUMSTANCES AND HAZARD RATINGS**

Activity	Vulnerability Score to produce a Significant DWT		Vulnerability Score to produce a Moderate DWT		Vulnerability Score to produce a Low DWT	
	IPZ-1,2,3, WHPA-E	WHPA-A, B, C, Cl, D	IPZ-1,2,3, WHPA-E	WHPA-A, B, C, Cl, D	IPZ-1,2,3, WHPA-E	WHPA-A, B, C, Cl, D
1) TRANSPORTATION OF AMMONIUM NITRATE  1. The transportation of Ammonium Nitrate. 2. The Ammonium Nitrate is transported in a quantity that is more than 2,500 litres. 3. A spill may result in the release of Ammonium Nitrate to groundwater or surface water.			8 - 10	8 - 10	5.4 - 7.2	6

2) TRANSPORTATION OF AMMONIA

Ammonia is a gas and therefore, there is no chemical hazard rating related to drinking water.

3) TRANSPORTATION OF FORMALDEHYDE

Activity	Vulnerability Score to produce a Significant DWT		Vulnerability Score to produce a Moderate DWT		Vulnerability Score to produce a Low DWT	
	IPZ-1,2,3, WHPA-E	WHPA-A, B, C, Cl, D	IPZ-1,2,3, WHPA-E	WHPA-A, B, C, Cl, D	IPZ-1,2,3, WHPA-E	WHPA-A, B, C, Cl, D
1. The transportation of Formaldehyde 2. The Formaldehyde is transported in a quantity that is more than 2,500 litres. 3. A spill may result in the release of Formaldehyde to groundwater or surface water.			8.1 - 10	10	5.6 - 8	6 - 8

**Table 2:  
CIRCUMSTANCES AND HAZARD RATINGS**  
4) TRANSPORTATION OF HYDROGEN PEROXIDE

No chemical hazard score was calculated for hydrogen peroxide as it dissociates readily to water and oxygen therefore, there is no chemical hazard rating related to drinking water.

5) TRANSPORTATION OF METHANOL

Activity	Vulnerability Score to produce a Significant DWT		Vulnerability Score to produce a Moderate DWT		Vulnerability Score to produce a Low DWT	
	IPZ-1,2,3, WHPA-E	WHPA-A, B, C, Cl, D	IPZ-1,2,3, WHPA-E	WHPA-A, B, C, Cl, D	IPZ-1,2,3, WHPA-E	WHPA-A, B, C, Cl, D
1. The transportation of Methanol. 2. The Methanol is transported in a quantity that is more than 2,500 litres. 3. A spill may result in the release of Methanol to groundwater or surface water.			9-10	8 - 10	5.6 - 8.1	6

6) TRANSPORTATION OF SODIUM HYDROXIDE

Activity	Vulnerability Score to produce a Significant DWT		Vulnerability Score to produce a Moderate DWT		Vulnerability Score to produce a Low DWT	
	IPZ-1,2,3, WHPA-E	WHPA-A, B, C, Cl, D	IPZ-1,2,3, WHPA-E	WHPA-A, B, C, Cl, D	IPZ-1,2,3, WHPA-E	WHPA-A, B, C, Cl, D
1. The transportation of Sodium Hydroxide. 2. The Sodium Hydroxide is transported in a quantity that is more than 2,500 litres. 3. A spill of Sodium Hydroxide may increase the pH of groundwater or surface water to above the acceptable range of 6.5-8.5, as specified in Table 4 of the Technical Support Document for Ontario Drinking Water Standards, Objectives and Guidelines.	10	10	8-9	8	5.4-7.2	6

**Table 2:**

**CIRCUMSTANCES AND HAZARD RATINGS**

**7) TRANSPORTATION OF SULPHURIC ACID**

Activity	Vulnerability Score to produce a Significant DWT		Vulnerability Score to produce a Moderate DWT		Vulnerability Score to produce a Low DWT	
	IPZ-1,2,3, WHPA-E	WHPA-A, B, C, CI, D	IPZ-1,2,3, WHPA-E	WHPA-A, B, C, CI, D	IPZ-1,2,3, WHPA-E	WHPA-A, B, C, CI, D
1. The transportation of sulphuric acid. 2. The sulphuric acid is transported in a quantity that is more than 2,500 litres. 3. A spill of sulphuric acid may decrease the pH of groundwater or surface water to below the acceptable range of 6.5-8.5, as specified in Table 4 of the Technical Support Document for Ontario Drinking Water Standards, Objectives and Guidelines.	10	10	8-9	8	5.4-7.2	6

**8) TRANSPORTATION OF SULPHUR DIOXIDE**

This is a gas, therefore, there is no chemical hazard rating related to drinking water

**9) TRANSPORTATION OF COPPER**

Activity	Vulnerability Score to produce a Significant DWT		Vulnerability Score to produce a Moderate DWT		Vulnerability Score to produce a Low DWT	
	IPZ-1,2,3, WHPA-E	WHPA-A, B, C, CI, D	IPZ-1,2,3, WHPA-E	WHPA-A, B, C, CI, D	IPZ-1,2,3, WHPA-E	WHPA-A, B, C, CI, D
1. The transportation of Copper. 2. The Copper is transported in a quantity that is more than 2,500 litres. 3. A spill may result in the release of Copper to groundwater or surface water.			8 - 10	10	5.4 - 7.2	6 - 8

**Table 2:**  
**CIRCUMSTANCES AND HAZARD RATINGS**  
 10) TRANSPORTION OF LIQUID FUELS

Activity	Vulnerability Score to produce a Significant DWI		Vulnerability Score to produce a Moderate DWI		Vulnerability Score to produce a Low DWI	
	IPZ-1,2,3, WHPA-E	WHPA-A, B, C, CI, D	IPZ-1,2,3, WHPA-E	WHPA-A, B, C, CI, D	IPZ-1,2,3, WHPA-E	WHPA-A, B, C, CI, D
1. The transportation of liquid fuel. 2. The fuel is transported in a quantity that is more than 250, but not more than 2,500 litres. 3. A spill of the fuel may result in the presence of BTEX in groundwater or surface water.			9 - 10	10	6 - 8.1	6 - 8
1. The transportation of liquid fuel. 2. The fuel is transported in a quantity that is more than 250, but not more than 2,500 litres. 3. A spill of the fuel may result in the presence of Petroleum Hydrocarbons F1 (nC6-nC10) in groundwater or surface water.			10	10	6.4 - 9	8
1. The transportation of liquid fuel. 2. The fuel is transported in a quantity that is more than 250, but not more than 2,500 litres. 3. A spill of the fuel may result in the presence of Petroleum Hydrocarbons F2 (>nC10-nC16) in groundwater or surface water.			10	10	6.3 - 9	8
1. The transportation of liquid fuel. 2. The fuel is transported in a quantity that is more than 250, but not more than 2,500 litres. 3. A spill of the fuel may result in the presence of Petroleum Hydrocarbons F3 (>nC16-nC34) in groundwater or surface water.			9 - 10	10	6 - 8.1	8
1. The transportation of liquid fuel. 2. The fuel is transported in a quantity that is more than 250, but not more than 2,500 litres. 3. A spill of the fuel may result in the presence of Petroleum Hydrocarbons F4 (>nC34) in groundwater or surface water.			10	10	6.3 - 9	8

14-075

**Table 2:  
CIRCUMSTANCES AND HAZARD RATINGS**

**1) TRANSPORTION OF LIQUID FUELS**

Activity	Vulnerability Score to produce a Significant DWT		Vulnerability Score to produce a Moderate DWT		Vulnerability Score to produce a Low DWT	
	IPZ-1,2,3, WHPA-E	WHPA-A, B, C, CI, D	IPZ-1,2,3, WHPA-E	WHPA-A, B, C, CI, D	IPZ-1,2,3, WHPA-E	WHPA-A, B, C, CI, D
1. The transportation of liquid fuel. 2. The fuel is transported in a quantity that is more than 2,500 litres. 3. A spill of the fuel may result in the presence of BTEX in groundwater or surface water.			8 – 10	8 – 10	5.4 – 7.2	6
			9 – 10	10	6 – 8.1	6 – 8
1. The transportation of liquid fuel. 2. The fuel is transported in a quantity that is more than 2,500 litres. 3. A spill of the fuel may result in the presence of Petroleum Hydrocarbons F1 (nC6-nC10) in groundwater or surface water.						
			8.1 – 10	10	5.6 – 8	6 – 8
1. The transportation of liquid fuel. 2. The fuel is transported in a quantity that is more than 2,500 litres. 3. A spill of the fuel may result in the presence of Petroleum Hydrocarbons F2 (> nC10-nC16) in groundwater or surface water.						
			8 – 10	8 – 10	5.4 – 7.2	6 – 8
1. The transportation of liquid fuel. 2. The fuel is transported in a quantity that is more than 2,500 litres. 3. A spill of the fuel may result in the presence of Petroleum Hydrocarbons F4 (>nC34) in groundwater or surface water.						
			8.1 – 10	10	5.6 – 8	6 – 8

14-075

**Table 2:  
CIRCUMSTANCES AND HAZARD RATINGS**

**12) TRANSPORTATION OF SEPTAGE**

Activity	Vulnerability Score to produce a Significant DWT		Vulnerability Score to produce a Moderate DWT		Vulnerability Score to produce a Low DWT	
	IPZ-1,2,3, WHPA-E	WHPA-A, B	IPZ-1,2,3, WHPA-E	WHPA-A, B	IPZ-1,2,3, WHPA-E	WHPA-A, B,
1. The transportation of septage. 2. The septage is transported in any quantity. 3. A spill of the septage may result in the presence of pathogens in groundwater or surface water.	9 - 10	10	7 - 8.1	8	4.5 - 6.4	6